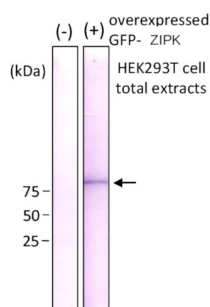


Product no **AS20 4511****Anti-GFP | Green Fluorescence Protein, clone 1A5 (rat monoclonal)****Product information**

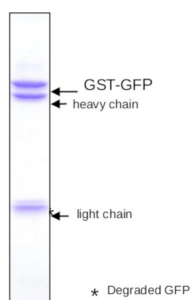
Immunogen	Recombinant GFP protein from <i>Aequorea victoria</i> , UniProt: P42212
Host	Rat
Clonality	Monoclonal
Subclass/isotype	IgG1
Purity	Immunoglobulin Protein A purified in PBS, 50 % glycerol, filter sterilized.
Format	Liquid, 1 mg/ml.
Quantity	100 µg
Storage	Store at -20 °C, Avoid repeated freeze-thaw cycles. Please remember to spin the tubes briefly prior to opening them to avoid any losses that might occur from material adhering to the cap or sides of the tube.
Additional information	Antibody detects GFP and EGFP

Application information

Recommended dilution	1 : 5000-1 : 25 000 (ELISA), 1 : 500 (IF), 1 : 2000-1 : 10 000 (WB)
Confirmed reactivity	Native GFP, Recombinant GFP (E. coli), all variants of GFP, including EGFP
Selected references	Maehara et al. (2015) . issue-specific expression of histone H3 variants diversified after species separation. <i>Epigenetics Chromatin</i> . 2015 Sep 17;8:35. doi: 10.1186/s13072-015-0027-3. (ChIP) Okazaki et al. (2012) . Nuclear localization signal in a cancer-related transcriptional regulator protein NAC1. <i>Carcinogenesis</i> . 2012 Oct;33(10):1854-62.doi: 10.1093/carcin/bgs193. (Immunoprecipitation)



Detection of GFP-ZIPK fusion protein over-expressed in HEK293 cells by Western protein with antibody 1A5. (-) HEK293T cell extract without overexpression (+) GFP-ZIPK protein- overexpressed HEK293T cell extract

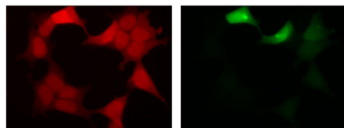


Immunoprecipitation of GST-GFP fusion blotting with antibody 1A5.

This product is **for research use only** (not for diagnostic or therapeutic use)

contact: support@agrisera.com

Agrisera AB | Box 57 | SE-91121 Vännäs | Sweden | +46 (0)935 33 000 | www.agrisera.com



Fluorescent image of COS1 cells with GFP of GST-ZIPK fusion protein expressed in HEK293T cells (Right) and the same cells were immunostained by using anti-GFP antibody 1A5, followed by Texas Red-conjugated anti-rat IgG (Left). Note that fluorescence by the immunofluorescent staining using 1A5 antibody is much stronger than fluorescence due to GFP (right panel).